

## Metal frame anchor HT



### Base materials

- Concrete (aerated)
- Concrete (uncracked)
- Masonry (hollow)
- Masonry (solid)
- Some types of natural stone

### Applications

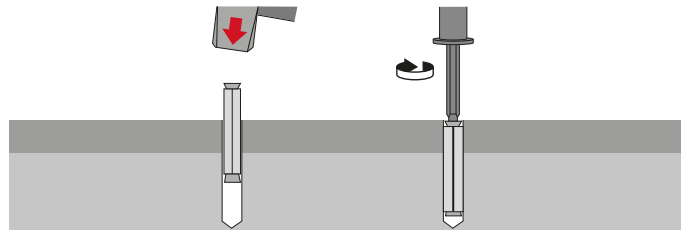
- Fastening door and window frames in a variety of base materials

### Advantages

- No risk of distortion or forces of constraint
- Expansion cone cannot be lost
- All metal construction

### Technical data

<b>Material composition</b>	Steel, 4.6 grade, zinc-plated (min. 5 µm), Sheet steel, sendzimir zinc-plated to approx. 16µm
<b>Head configuration</b>	Countersunk, Flat head
<b>Anchor length</b>	72 mm
<b>Anchor size</b>	10 mm



These are abbreviated instructions which may vary by application. Always review/follow the instructions accompanying the product or refer to [www.hilti.com/techlib](http://www.hilti.com/techlib).

Ordering designation	Drill bit diameter	Sales pack quantity	Item number
HT 10X72	10 mm	100 pc	369263 <sup>1)</sup>

<sup>1)</sup> This is a non-stock item. For detailed lead time information please contact your Hilti representative.

Please visit our website for the latest item numbers and related products.