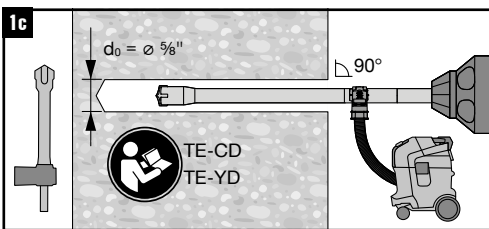
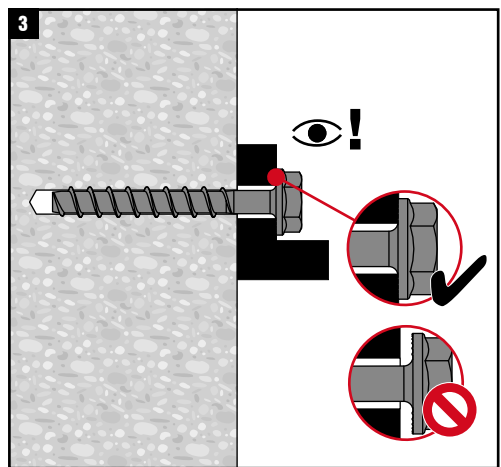
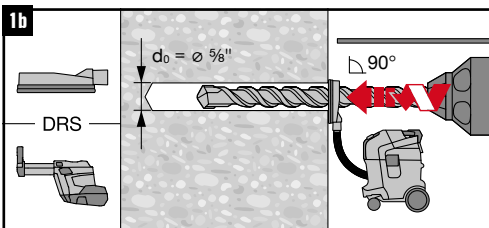
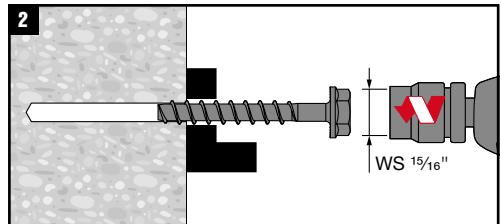
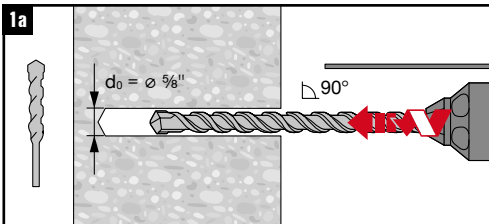


KH 5/8"	h ₁ *	h _{nom1} = 3.25"	h _{nom2} = 5.0"
		t _{fix1} max. (in.)	t _{fix3} max. (in.)
5/8" × 4"	4 3/8" - t _{fix}	3/4"	-
5/8" × 5 1/2"	5 7/8" - t _{fix}	2 1/4"	1/2"
5/8" × 6 1/2"	6 7/8" - t _{fix}	3 1/4"	1 1/2"

	Nuron SIW 4-22		
	Nuron SIW 6-22		
	CPC SIW 22T/18T-A		
	CPC SIW 9-A22/A18		
		85 ft-lb	85 ft-lb



*For non-hole cleaning installation (steps 1.a or 1.b), make sure to drill deep enough to achieve h, taking into account the depth of debris remaining in the hole

